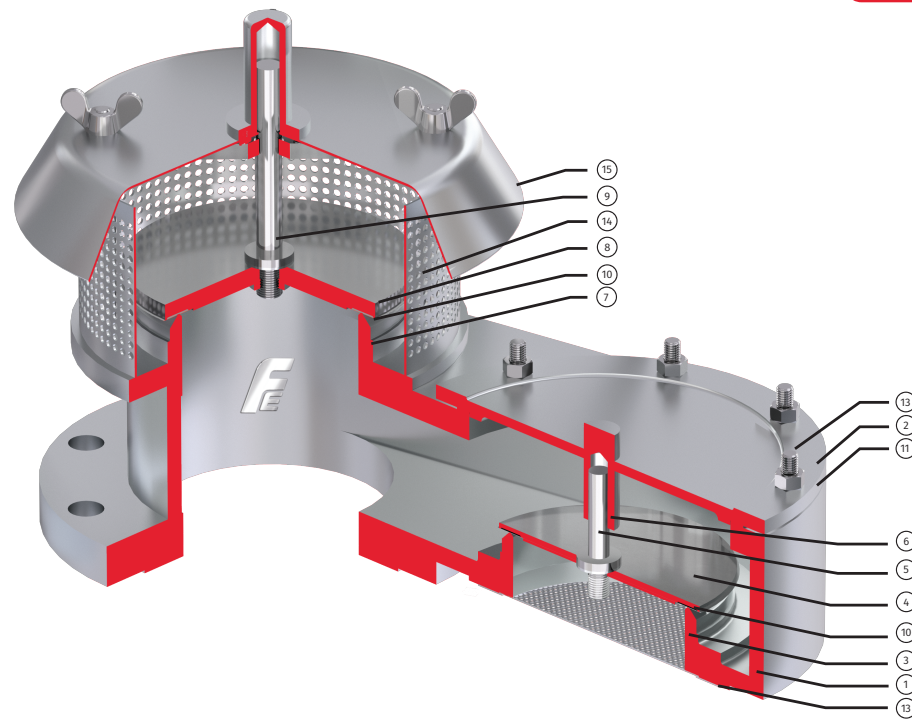


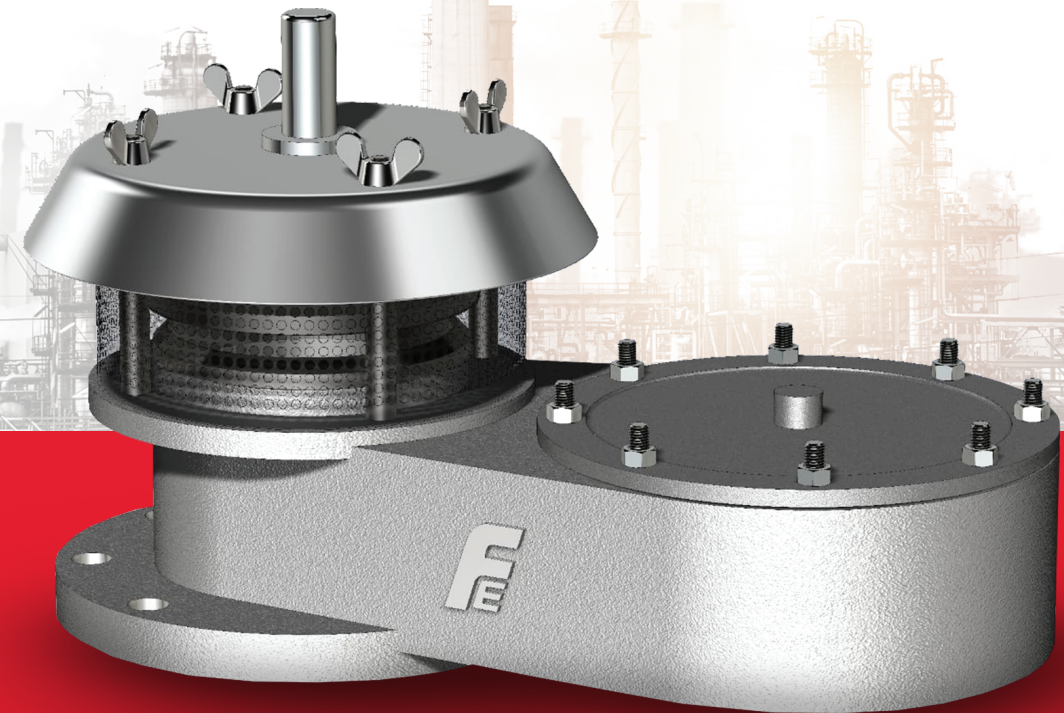


SR.NO.	DESCRIPTION
15	WEATHER HOOD
14	PRESSURE BIRD SCREEN
13	VACUUM BIRD SCREEN
12	FASTENERS
11	GASKET
10	DIAPHRAGM
09	PRESSURE SPINDLE
08	PRESSURE PALLET
07	PRESSURE NOZZLE
06	VACUUM GUIDE
05	VACUUM SPINDLE
04	VACUUM PALLET
03	VACUUM NOZZLE
02	VACUUM COVER
01	BODY

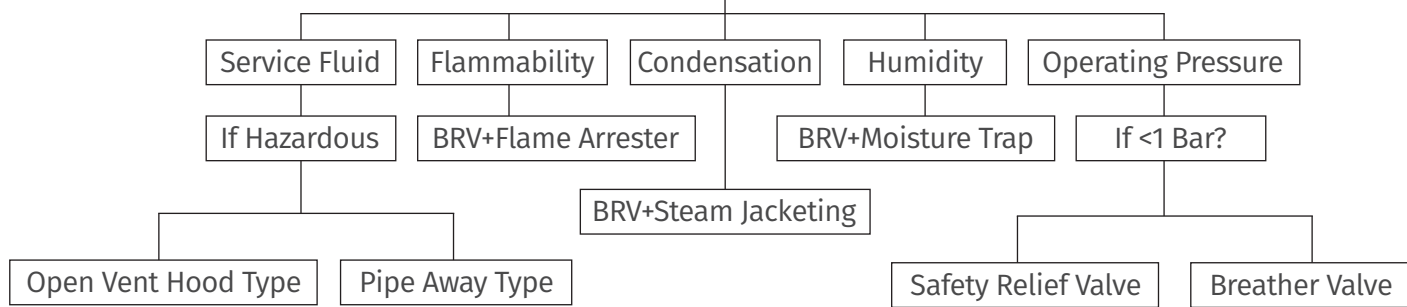


END OF LINE BREATHER VALVE

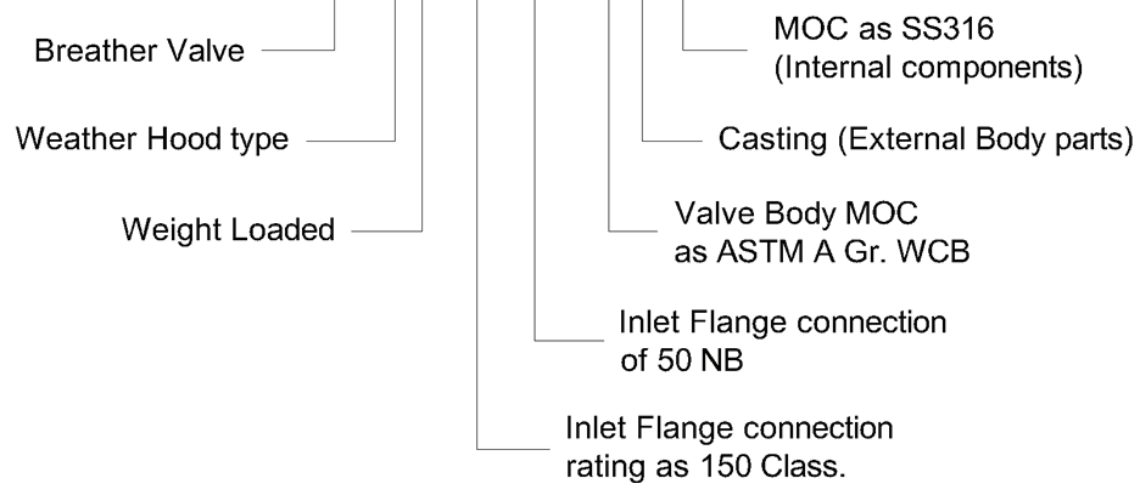
(CONSERVATION VENT)



BREATHER VALVE



BRVHW - Z - 50 - CSC/S6



OBJECTIVE

The Fainger Breather Valves, also known as direct-acting Pressure/Vacuum Relief Valves or Conservation Vents, are specially designed for tank protection and intended for use where pressure and vacuum relief are required.

OPERATING PRINCIPLE

As the pressure builds in the tank, there is a differential created across the pressure relief Pallet. When this differential becomes great enough to lift the pallet; the pallet unseats / lifts and allows Vapor flow out of the tank. The Pallet Re-Seats when the differential becomes low.

Similarly, when vacuum is developed in the tank, the differential across the vacuum pallet eventually becomes great enough to lift the vacuum pallet and allows air to flow into the tank. The vacuum pallet re-seats when the differential is low.





SPECIAL FEATURES & BENEFITS

- Designed and tested according to API2000
- Sizes available from 1" to 12".
- Pressure Setting: (+) 20 mmwc(g) to (+) 10000 mmwc(g).
- Vacuum Setting: (-) 20 mmwc(g) to (-) 5000 mmwc(g).
- Standard materials include carbon steel and stainless steel (Other material types are available on request).
- Vented to atmosphere, modular construction.
- Inlet flanges are in accordance with ANSI 150#RF (Other specifications are available on request).
- PTFE diaphragms effectively prevent the seat and pallet from sticking.
- Valves can be specially supplied with a flame arrester, inlet pipe, or lining.

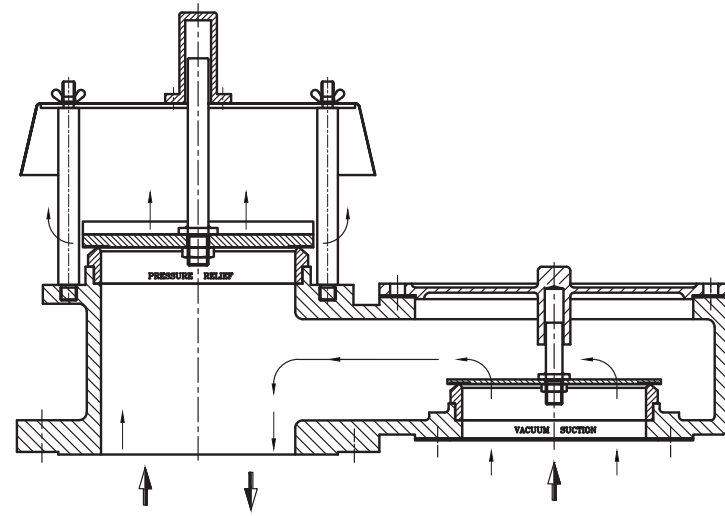
CONSTRUCTION

STANDARD:

- External Body: Cast carbon steel
- Internal Trim Parts: Stainless steel
- Diaphragms: Teflon cushion pallet

CUSTOM:

- External Body: Cast stainless steel
- Internal Trim Parts: Stainless steel
- Diaphragms: Teflon cushion pallet



Other special materials or coatings/linings are available to withstand the corrosive action of some vapors and atmospheric conditions.

DIMENSIONS & WEIGHT

Size Inch	D Bore dia	A	B	C	OD	RFØ	THK.	PCD	Hole Ø	No. of Holes
1 1/2"	40	240	115	115	125	73	17.9	98.4	15.9	4
2"	50	260	135	130	150	92.1	19.5	120.7	19	4
3"	75	350	170	155	190	127	24.3	152.4	19	4
4"	100	360	190	185	230	157.2	24.3	190.5	19	8
6"	150	550	270	280	280	215.9	25.9	241.3	22.2	8
8"	200	610	300	335	345	269.9	29	298.5	22.2	8
10"	250	660	350	360	405	323.8	30.6	362	25.5	12
12"	300	660	370	360	930	381	32.2	431.8	25.4	12

ALL DIMENSIONS ARE IN MM

MATERIALS OF CONSTRUCTION

Housing (body)	Carbon Steel / Stainless Steel / Aluminium / Duplex stainless steel
Valve Seats	Stainless Steel
Gasket	PTFE / NACF / Grafoil / Spiral wound
Weather Hood	Stainless Steel
Pressure Pallet	Stainless Steel / Aluminium
Vacuum Pallet	Stainless Steel / Aluminium
Special materials upon request	

